

MOOMIN

CREATE AND DECORATE YOUR MOOMINHOUSE

1



© Moomin Characters™

© 2017 K.K. DeAgostini Japan

All Rights Reserved.

UNITED KINGDOM

Published by De Agostini UK Ltd
c/o Royds Withy King,
69 Carter Lane,
London EC4V 5EQ.

USA

Published by De Agostini Publishing USA, Inc.
299 Park Avenue,
New York, New York 10171.

ISSN 2753-6602

Printed in Italy

CUSTOMER SERVICES

UNITED KINGDOM

Email customer.service@deagostini.co.uk

USA

Email support@usa.deagostini.com

The price of this issue includes the magazine and the attached pieces for model assembly.

TO OUR READERS

The publisher reserves the right to modify any components as required during the course of the collection. Not suitable for children under the age of 14 (12 in the USA). This product is not a toy and is not designed or intended for use in play. The collection is complete in 110 issues. Items may vary from those shown.

WARNING

Any reproduction, even partial, of the contents of the magazine is prohibited without permission from the Publisher. The model and the magazine that accompanies it are strictly for private use, and within the family, in accordance with Article L122 - 5 10 of the Code of Intellectual Property. Any reproduction other than that provided for in Article L122 - 5 20 of the Intellectual Property Code is prohibited. The magazine and/or elements of the collection may not be distributed, loaned, resold, rented or exploited for commercial purposes.

All rights reserved.

More information at deagostini.com

MOOMIN 1

CREATE AND DECORATE YOUR MOOMINHOUSE



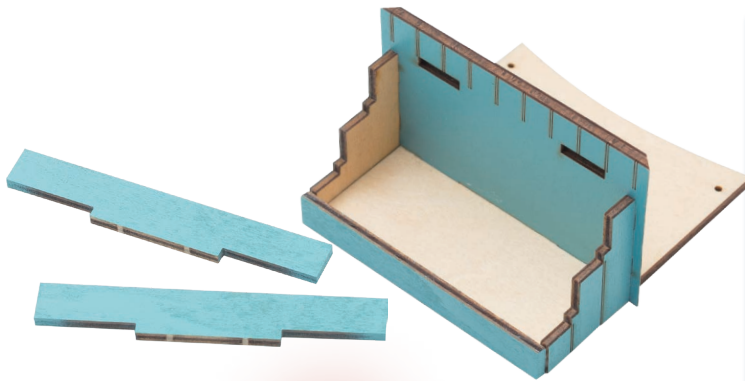
IN THIS ISSUE

Start assembling the Moominhouse with the front porch and Moomintroll's bed. A character figure is also included with this issue! Follow the instructions on pages 8 to 11 and have lots of fun. Enjoy the process of making your Moomin house homely!



FRONT PORCH BASE

The base of the front porch, where not only the Moomins enter the house, but also their many guests.



MOOMINTROLL



MOOMINTROLL'S BED



The bed in the attic. The pillow and bedspread are in the next issues.



CONTENTS



page 4

RESIDENTS OF MOOMINVALLEY

Inquisitive and kind Moomintroll



page 6

THE CHRONICLES OF MOOMINVALLEY

How the Moominhouse was made.



page 8

ASSEMBLING THE MOOMINHOUSE

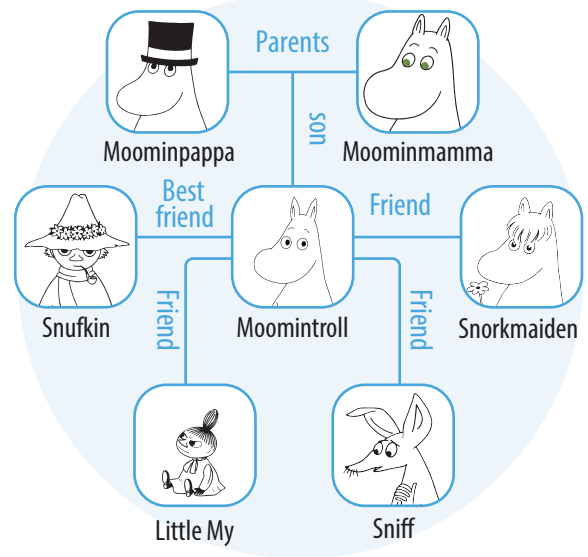
Front porch base and Moomintroll's bed



INQUISITIVE AND KIND

MOOMINTROLL

The youngest of the Moomin family.
Kind, caring and adventurous. Sometimes
indecisive, but always cheerful and energetic.



Fact File:

NAME:
Moomintroll

FAMILY:
Moomins

LIVES: In the
Moominhouse

A snow-white creature with a fluffy tassel on his tail, a round face and a round torso, he lives with his mother and father in the Moominhouse in Moominvalley. He is an inquisitive, brave, helpful, and kind character, but he can sometimes be teased by his friends Little My and Snorkmaiden, because he is so easy-going. He doesn't like quarrels or fights, but is ready to stand up for his friends: when, in *Comet in Moominland*, Snorkmaiden is attacked by the predatory



Angostura bush, Moomintroll doesn't hesitate to rush at it with a penknife.

As the house is always full of guests, Moomintroll sleeps either in his room on the first floor, or in the attic with his friends Sniff and Snufkin, or outside, for a change of scenery.

Variations

Moomintroll appears in almost every Tove Jansson story. The basic look of the character does not change, but there are slight differences, depending on the illustrator. For example, in illustration from *Comet in Moominland* at the bottom of page 4, Moomintroll has an elongated nose and smaller eyes. In the pictures on this page, he is noticeably rounder.

In the comic book series, aimed at an older audience, Moomintroll appears as a more sensible character. You can notice that Tove Jansson's younger brother Lars, who went on to illustrate the comics after his sister, depicted Moomintroll as more angular. The cartoons, based on the books and the comics, are influenced by the period in which they were made. The earlier cartoons portray Moomintroll as somewhat of a prankster, while the more recent *Moominvalley* portrays him as a younger, playful, and adventurous character.



Although author Tove Jansson intended Moomintroll to be white, some versions of the hero are blue or gray.



In the cartoon *The Journey of the Moomintrolls*, the hero has a light blue coloring. This animated series was created with author Tove Jansson's participation.

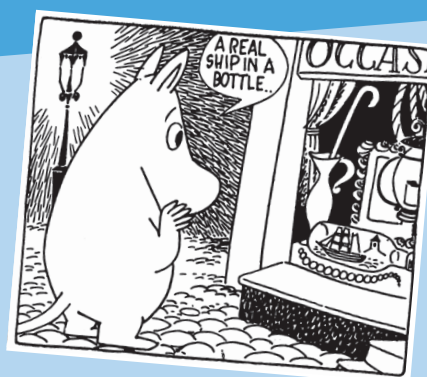


The Moomin puppet films, in which the characters were made of velour fabric, is said to have been a particular favorite of Tove Jansson's.

© Filmkompaniet/Filmoteka Narodowa/Jupiter
Film/Moomin Characters™

Favorite things

Moomintroll loves the sea and everything to do with it. He collects seashells from the seashore, swims in his swimming trunks, dives and retrieves pearls from the bottom. On one of his sea voyages, he fell in love with a ship in a bottle, which he took with him and brought home.



"A real ship in a bottle..." thought Moomintroll to himself as he looked in the window. From the comic *Moomin sets sail*.

Moomintroll's thoughts



**What troubles people have.
Perhaps the jam isn't such an
awful matter, after all..**

Moomintroll's thoughts, from *Moominland Midwinter*

During a long, harsh winter, the Moomin family goes into hibernation, according to an ancient tradition. But it so happens that Moomintroll wakes up. Alone, he copes with hardship, darkness, and cold. And then he tries to give a warm welcome to the creatures who visit his sleeping home. Our hero mutters the line above as he puzzles over what to do with the approaching end of Moominmamma's supply of jam.



HOW THE MOOMINHOUSE WAS MADE

The Moominhouse is the setting of all the Moomin stories. So when and how did it come into being? It's an amazing story!



One day, at the end of August, Moomintroll and his mother set off to find Moominpappa, who has gone on a long journey with the Hattifatteners. He wandered off in search of a place where the family could spend the winter, and got lost in the forest. On their journey, Moomintroll and Moominmamma meet a small creature called Sniff and a young girl with shining blue hair called Tulippa. The group continue on their quest to find Moominpappa, and visit wonderful places along the way. After a flood, they continue their search, and finally see Moominpappa. He is sitting in a tree waving a flag that says 'SOS'. Moominpappa tells his family he built a house for all of them, but that it was swept away by a flood.

The next day, when our heroes come to a small valley, they see an enchanting scene. In the middle of the green grass stands a house with blue walls, shaped exactly like a porcelain stove. It is the house built by Moominpappa, which has been swept into the valley by the flood! And so begins the family's happy life in their new home.

An image of the Moominhouse from the book The Moomins and the Great Flood. Blue walls, three rooms, and an attic for guests.

MAP OF MOOMINVALLEY

This map of the Moominvalley is from the first Moomin book. In the center is the small Moominhouse with its pointed roof. To the east are the Lonely Mountains, surrounded by a river, to the west is the seashore and the bathing area. To the north of the Moominhouse are thickets of lilacs and then large trees. To the north-west, in the sea, is the Hattifatteners' Island.



MOOMINPAPPA'S MEMOIRS

Moominpappa is drawing a design for a house. When he was young, he dreamed of being a great adventurer, and of building a house with his own hands. Growing up in an orphanage, Moominpappa escaped and, during his wanderings, drew his dream house in the sand.



MOOMINS

Interesting facts

MORE ABOUT THE MOOMINS

The first book about the Moomins, *The Moomins and the Great Flood*, was published in Finland in the year 1945, the year World War II ended. It was a very small book of 46 pages, and it was not sold in bookshops, but at newsstands. Sales and reviews were not large, as much of the story's plot and setting reminded readers of the recent war. Tove Jansson and her characters became popular only after the third book, and from then on, the author was acclaimed by publishers and readers worldwide. Oddly, this was the last Moomin book to be translated into English, in 2005, as part of the celebrations of 60 years of the Moomins.



Cover of the Swedish edition of the story *The Moomins and the Great Flood*, 1945



FRONT PORCH BASE



MOOMINTROLL'S BED

HOME BUILDING

1 Porch base

2 Rear wall

3 Right-hand sidewall

4 Left-hand sidewall

5 Steps A (x 2)

6 Step B

7 Bed headrest

8 Bed footrails

FURNITURE

9 Frame

10 Lower base

11 Mattress

12 Bed sheet

13 Double-sided adhesive tape**

14 Sandpaper No. 240

15 Wood glue

16 Moomintroll figure

TOOLS REQUIRED*

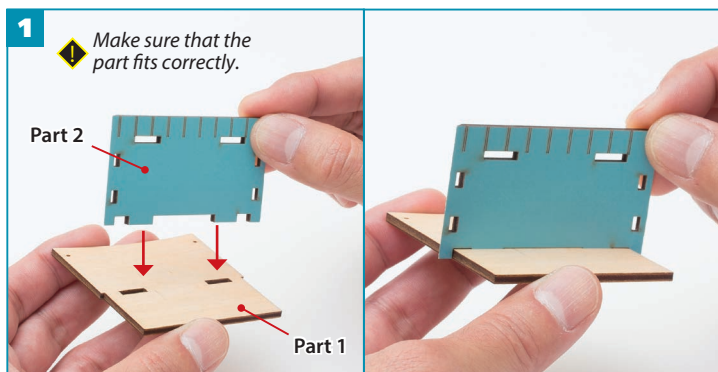
- ☐ Stationery knife
- ☐ Masking tape
- ☐ Toothpicks
- ☐ Modelling mat

** not included*

****13 Double-sided adhesive tape for the figure (stick it on the feet if you want the figure to stand)**



ASSEMBLING THE FRONT PORCH BASE



1 Insert part 2 into part 1, at first without using glue.

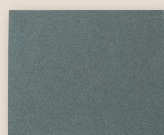
TIP

If the part does not fit, roughen the edges of the tabs with sandpaper. Take care not to damage the main painted surface. For tips on using sandpaper, see the box below.



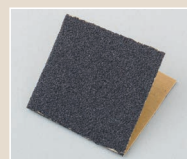
2 After making sure that the part fits correctly, apply adhesive to the edge of part 2. For tips on using the adhesive, see the box on the right.

HOW TO USE THE TOOLS



SANDPAPER

Sandpaper is used for adjusting wooden parts and for painting. It is selected according to the grit size number. The starter kit includes abrasive paper No. 240.



Generally, sandpaper is used in a folded condition. Cut out a piece to the right size and fold it in half.

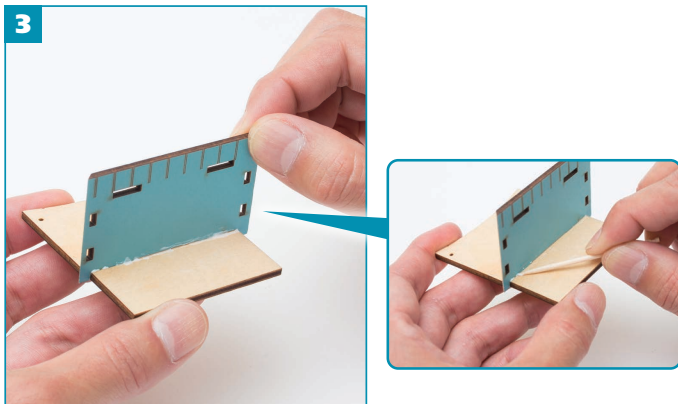


WOOD GLUE

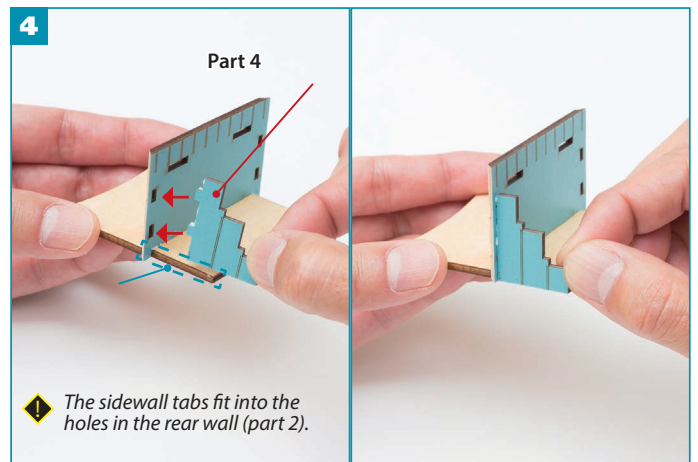
Tubes of glue in the starter kit are ready for use after opening the cap and removing the inner lid.



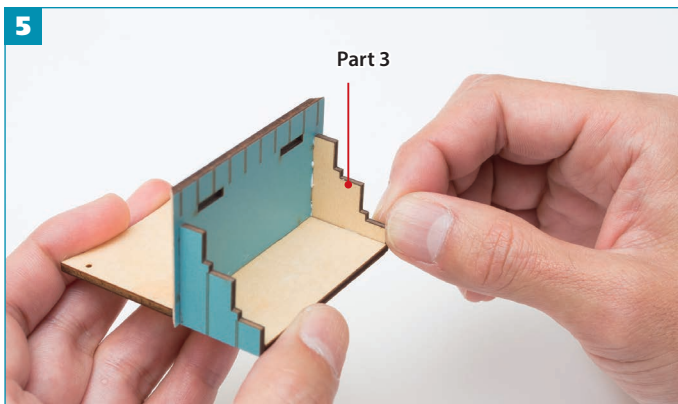
If you have not worked with glue before, it is best not to apply it directly to the part. Squeeze some glue onto a piece of plastic bag. Apply the glue to the part by putting the required amount on the tip of a toothpick.



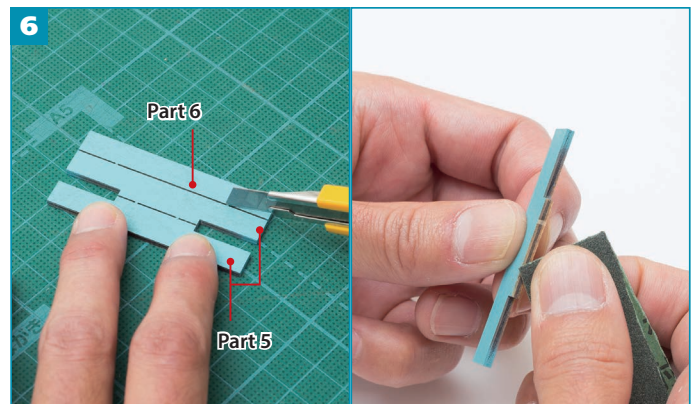
3 Carefully remove any excess glue with a toothpick before it dries.



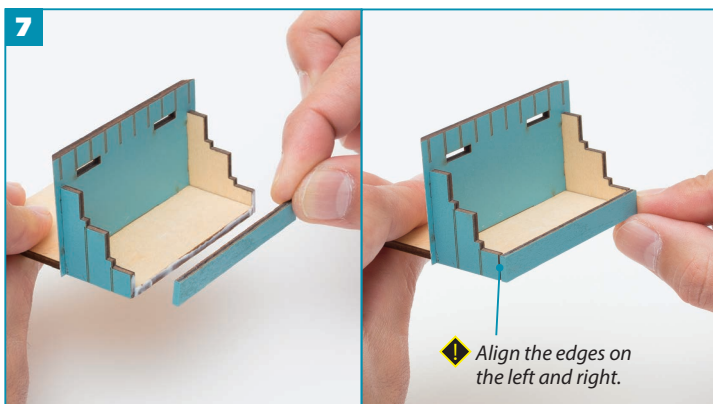
4 Insert the left-hand porch sidewall (part 4). Apply glue to the porch base (part 1) and the area where the rear wall (part 2) joins the porch sidewall.



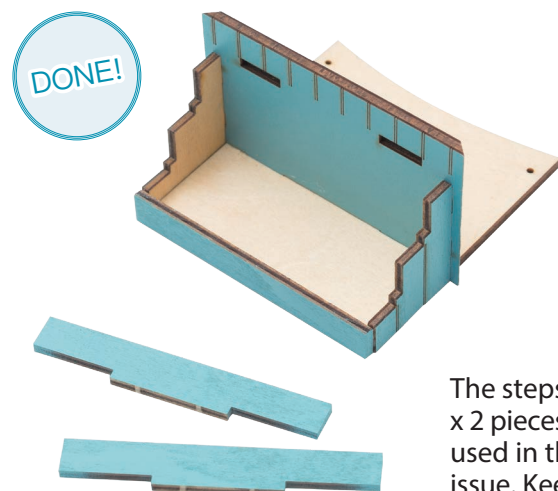
5 Attach the right-hand porch sidewall (part 3) on the opposite side in the same way.



6 Use a craft knife to separate the steps (parts 5 and 6) by cutting them evenly along the line with a knife (as in the left photo). If the cut is uneven, sand it flat with sandpaper, as shown in the photo on the right.



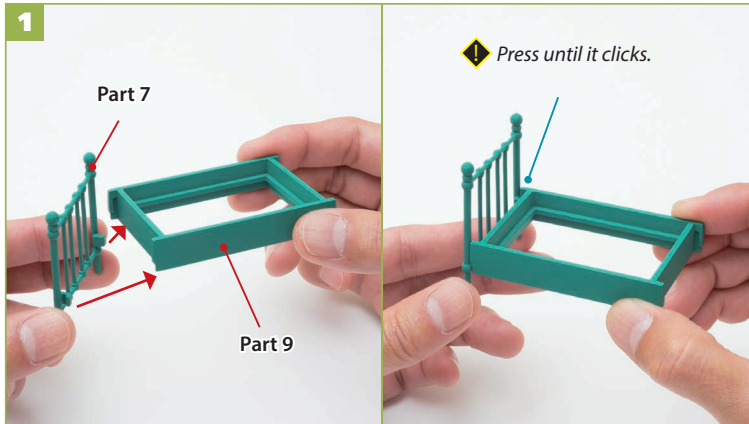
7 Attach the riser of step B (part 6) by putting glue on the edge of parts 1, 3 and 4, as shown. Align the edges on the left and right.



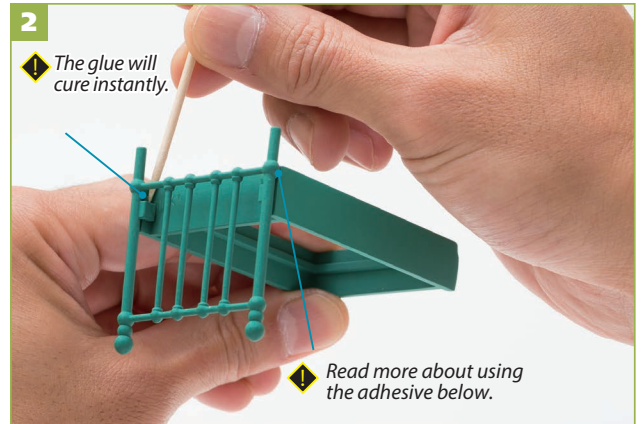
The steps (part 5, x 2 pieces.) will be used in the next issue. Keep all the pieces in a safe place so that they won't be lost.



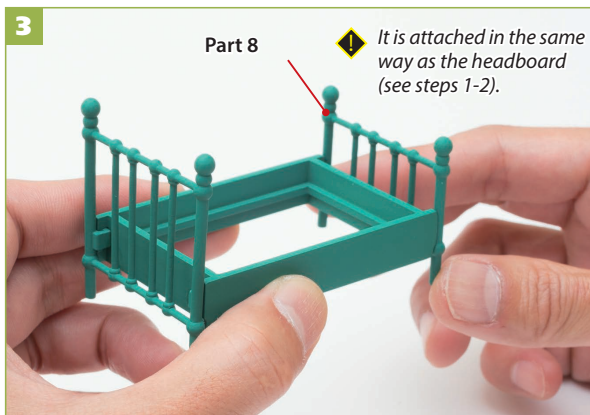
ASSEMBLING MOOMINTROLL'S BED



1 Join the bed headrest (part 7) and the frame (part 9) together. The frame tabs should snap into place on the corner tabs of the headrest.



2 Secure the joints with the quick-dry glue to make them more secure. To do this, turn the bed over and use a toothpick to gently apply glue to the joint.



3 Attach the footrest (part 8).



INSTRUCTIONS

QUICK-DRY GLUE

1. Clean the surfaces to be joined of dirt and dust beforehand.

2. Apply adhesive to one surface and press it onto the other.

3. After use, close the lid tightly. Store in a place away from sunlight.

How to open a tube

- 1** Remove the protective cap and screw clockwise together with the spout.
- 2** Screw in firmly.
- 3** From now on, only remove the protective cap.

• Do not bend the tube. • When disposing of it, wrap the used tube in paper and throw it away with the non-recyclable waste.

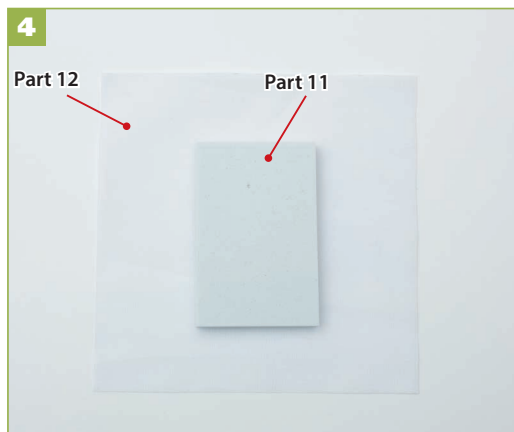
Polymeric adhesive. Composition: 95% cyanoacrylate, 3 g

WARNING!

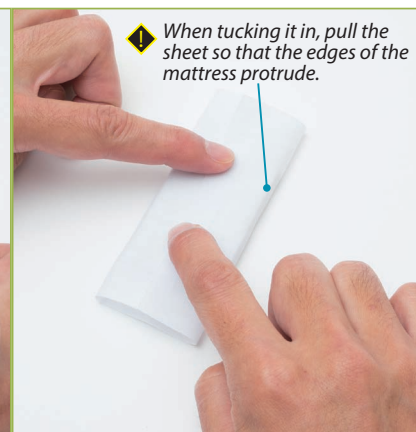
• The glue hardens quickly! • Be careful when it comes into contact with the skin. If the glue comes into contact with the skin, wash it off with warm water. • In case of contact with eyes, rinse immediately with plenty of water. • Once spilled on clothes, the adhesive is not removable! • Be careful not to use near open flames. • After use, ventilate the area and keep glue away from children. Do not allow children to use the adhesive on their own.

NO PEACE FOR MOOMINTROLL

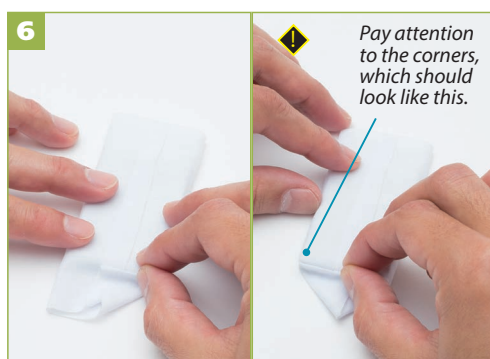
For hibernating Moomins, the bed is a place of peace and tranquillity. However, in the Moominhouse, which is always full of guests, sometimes it is impossible to get a good night's sleep! Picture from the comic strip *Moomintroll and the Outlaws*.



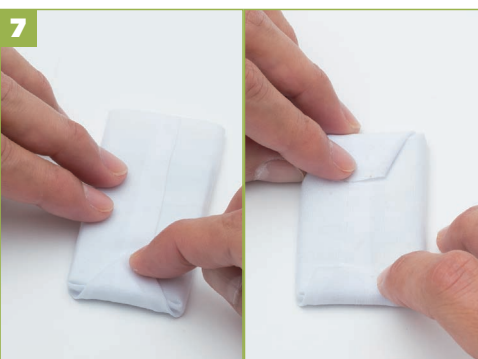
4 Place the mattress (part 11) on the fabric (part 12) as shown in the picture.



5 Fold the left and right edges of the sheet over the mattress, and glue them together.



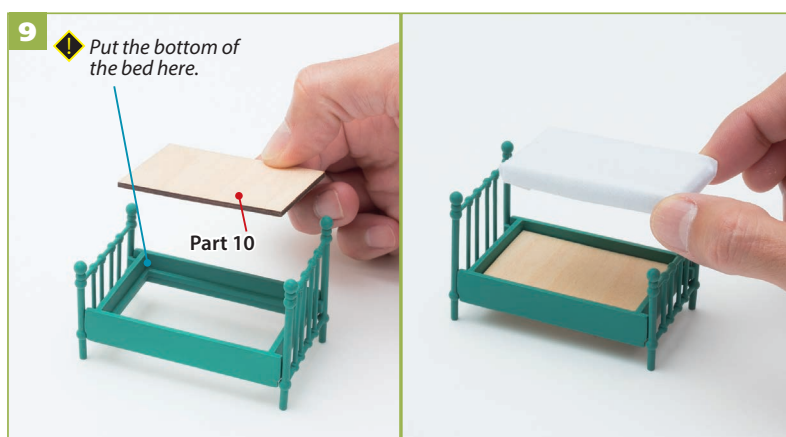
6 Fold in the top and bottom edges of the fabric. First fold them diagonally.



7 Fold the fabric at the top and bottom and secure with glue.



8 Once the glue has dried, apply double-sided tape.



9 Apply a small amount of glue around the four corners of the bed frame and fit the bottom of the bed (part 10). Finally, place the mattress you finished in step 8.



You have created a scene from the book – Moomintroll next to his bed!

MOOMIN

CREATE AND DECORATE YOUR MOOMINHOUSE

