



Cosmo **SPORT**



PACK 01

DEAGOSTINI
MODELSPACE™
www.model-space.com



Cosmo **SPORT**

STAGE

- | | |
|---|------------------|
| 1 | THE BONNET - 1 |
| 2 | THE BONNET - 2 |
| 3 | THE FRONT BUMPER |
| 4 | THE HEADLIGHTS |
| 5 | THE FIRST BRAKE |

P.

- | |
|----|
| 1 |
| 4 |
| 6 |
| 8 |
| 10 |



DEAGOSTINI
MODELSPACE™
www.model-space.com

Designed and produced by Milanoedit srl – www.milanoedit.com

Published by De Agostini Publishing S.p.A., 28100 Novara,
Via G. da Verrazzano 15

All rights reserved © 2020

NOT SUITABLE FOR CHILDREN UNDER THE AGE OF 14.

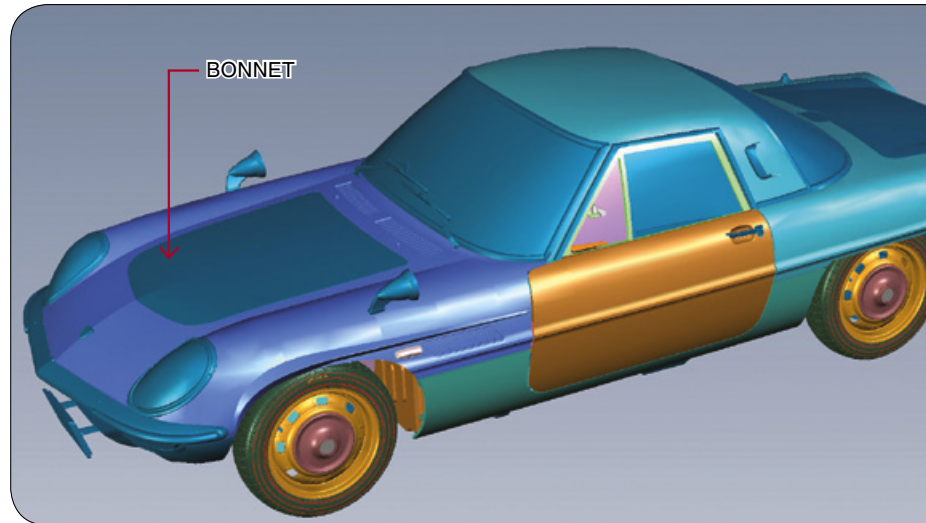
THIS PRODUCT IS NOT A TOY AND MUST BE USED UNDER
THE SUPERVISION OF AN ADULT.

ITEMS MAY VARY FROM THOSE SHOWN.



1 THE BONNET - 1

In this stage you will start building the 1:8 scale Mazda Cosmo Sport model car and the 1:2 scale rotary engine. Follow our instructions and the explanatory photographs carefully.



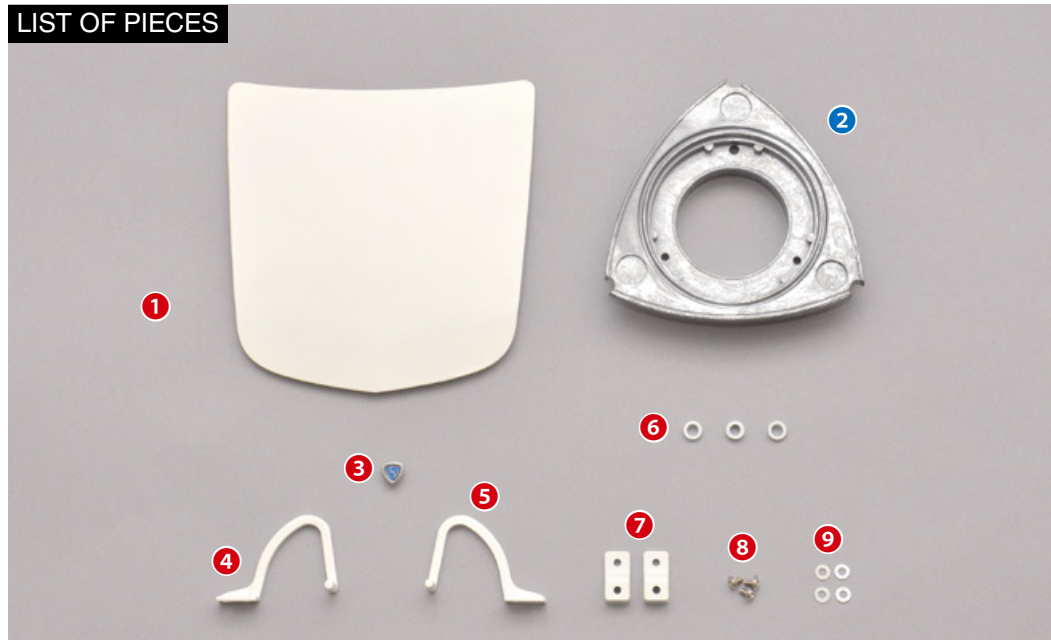
TOOLS NEEDED

- Cross screwdriver

RECOMMENDED TOOLS

- Sellotape
- Tweezers

LIST OF PIECES



- | | |
|--------------------------|-----------------------------------|
| 1 Bonnet | 7 Hinge plates |
| 2 Rotor A | 8 Screws (2 x 3.5mm) x3 (1 spare) |
| 3 Emblem | 9 Washers x4 (2 spares) |
| 4 Hinge (R) | |
| 5 Hinge (L) | |
| 6 Hinge clamps (1 spare) | |

- Parts for the 1:8 scale Mazda Cosmo Sport model car
- Parts for the 1:2 scale rotary engine

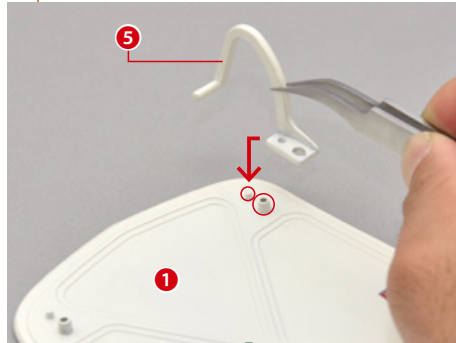


COSMO SPORT

Step

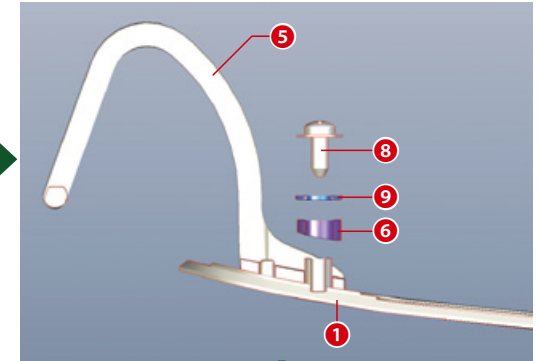
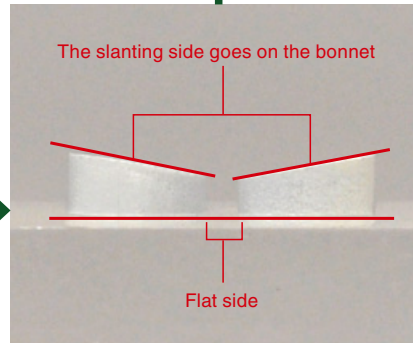
1

The left bonnet hinge



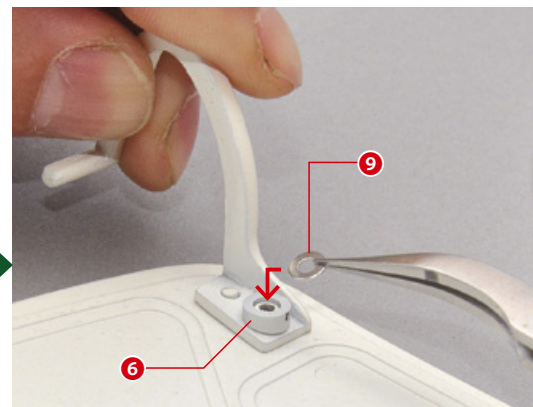
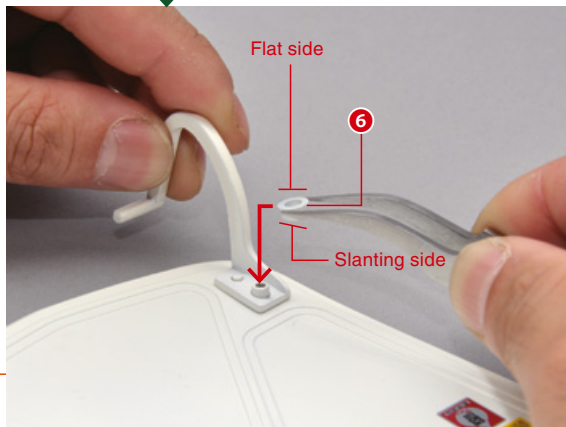
Turn the bonnet (1) over and attach the left hinge (5) as shown in the photo.

Before putting the clamp (6) on, look at the photos to understand which way it should go.



The above illustration indicates the pieces you need to attach the hinge (5).

Slide a clamp (6) onto the linchpin indicated in the photo. If you wish, you can temporarily secure the hinge (5) with sellotape to help you.



Place a washer (9) over the clamp (6).

Make sure the clamp (6) is facing the correct way, then secure the pieces with a screw (8) as shown. Tighten it completely.



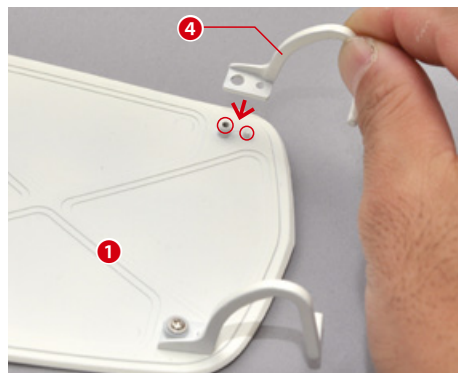


COSMO SPORT

Step

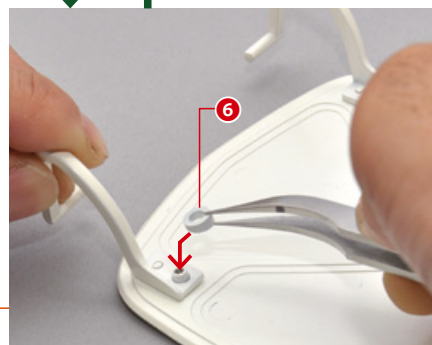
2

The right hinge



To attach the right hinge (4), follow the instructions in Step 1.

Slide on a clamp (6) as shown in the photo, followed by a washer (9).



Make sure the clamp (6) is facing the correct way, then secure the pieces with a screw (8) as shown. Tighten it completely.

COSMO SPORT

Step

3

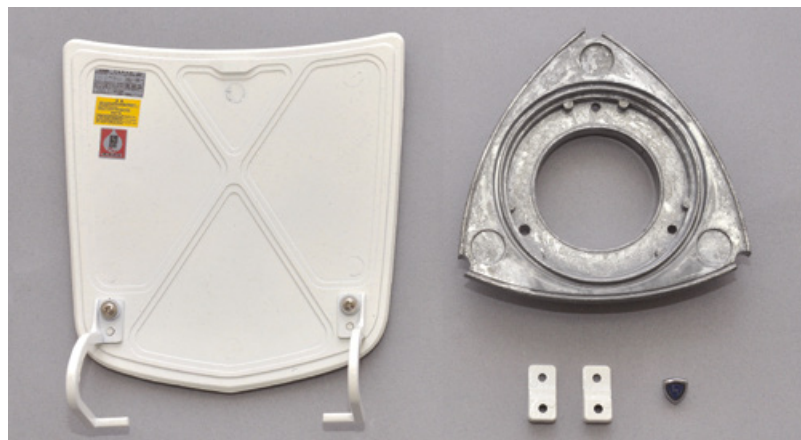
Check



Check that you have installed both hinges correctly. Try moving them slightly. If the clamps are still loose after tightening the screws, you can put another washer (9) on top of the first one.

FINAL RESULT

Here's what the bonnet looks like at the end of this assembly session. Keep the parts you haven't used in a safe place.



The next stage

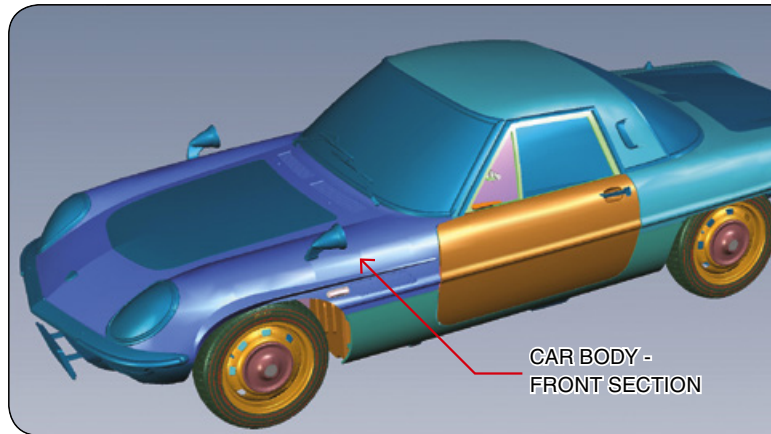


The front section of the car body.



2 THE BONNET - 2

In this stage you will attach the bonnet to the front section of the body. Thanks to the hinges, you will be able to open and close the bonnet, just like on the real version!



TOOLS NEEDED

- Cross screwdriver

RECOMMENDED TOOLS

- Tweezers

LIST OF PIECES



- 1 Front section of the car body
- 2 Front "Cosmo" logo (WARNING: keep away from light sources)
- 3 Screws (2.3 x 5mm) x5 (1 spare)
- 4 Rotor housing part A
- 5 Rotor housing part B

- Parts for the 1:8 scale Mazda Cosmo Sport model car
- Parts for the 1:2 scale rotary engine

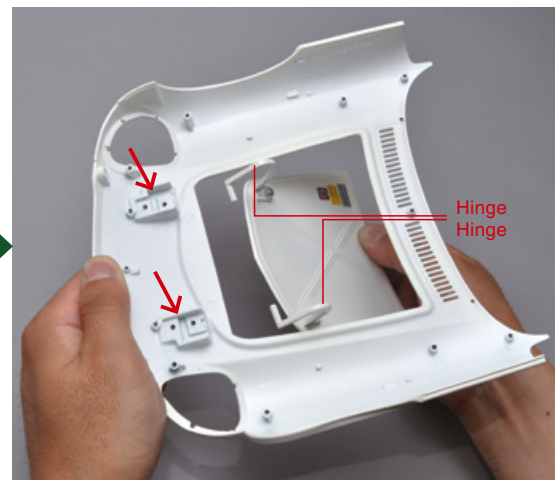
COSMO SPORT

Step

1 Attaching the bonnet to the car body



Attach the bonnet you assembled in the previous stage to the front section of the car body (1).



Insert both bonnet hinges into the slots indicated by the arrows in the photo.



The hinges inserted correctly in the slots.

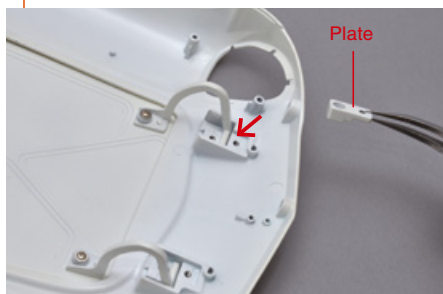


COSMO SPORT

Step

2

Securing the hinges



Get one of the hinge plates that came with Stage 1 and position it as shown in the photo.



Repeat the same operation on the other hinge: position the other plate and secure it with two screws.

Secure the hinge plate with two of the screws you received with this stage.

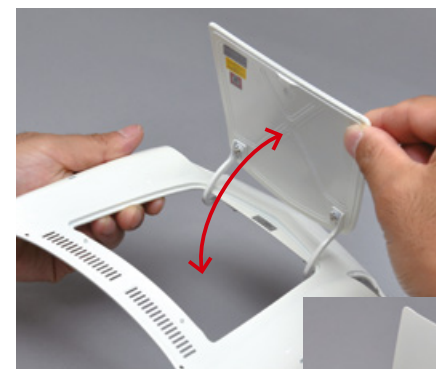


COSMO SPORT

Step

3

Check



Try opening and closing the bonnet to check for any problems.



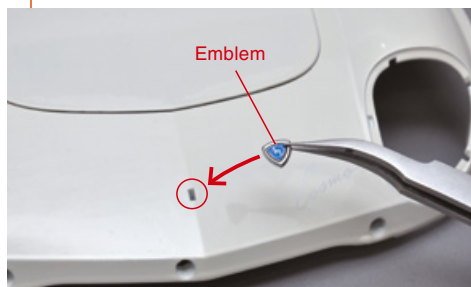
If you have difficulty opening it, loosen or tighten the screws until you get the desired result.

COSMO SPORT

Step

4

The emblem



Insert the emblem that came with the previous pack into the slot indicated in the photo.



How the emblem should look.

FINAL RESULT



The next stage

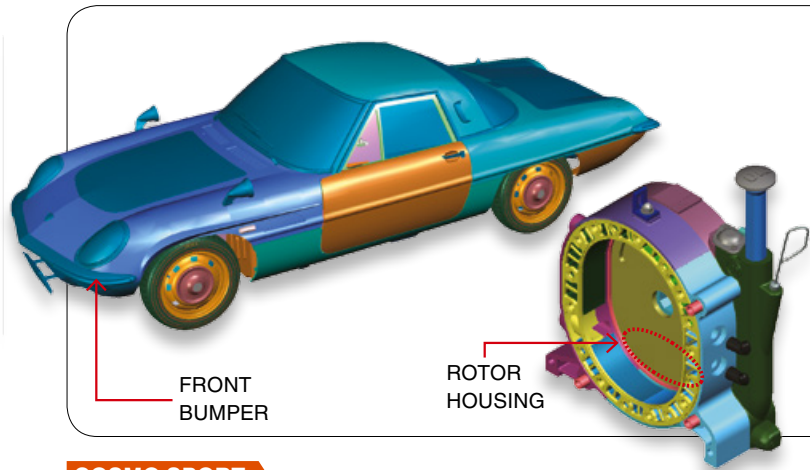


This is what the front section of the car body looks like with the bonnet attached correctly. Keep it in a safe place with the remaining pieces, which you will use in the next stages.



3 THE FRONT BUMPER

In this stage you will assemble the front bumper. If you have difficulty assembling it due to the thickness of the coating, we recommend you file down the pieces.



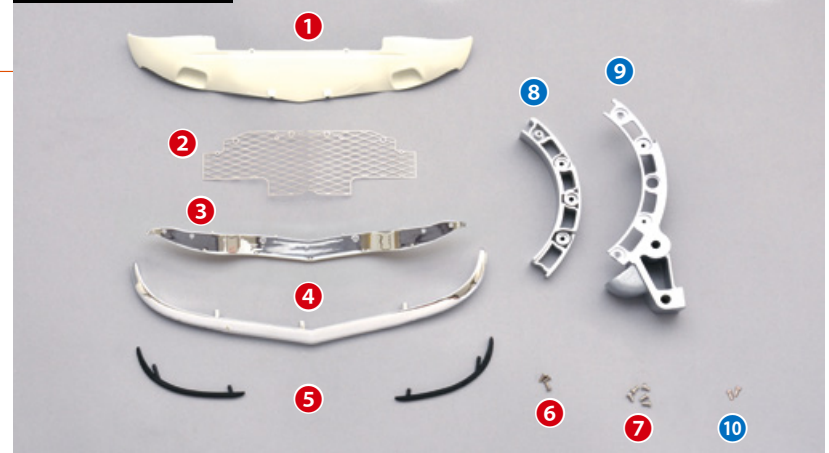
TOOLS NEEDED

- Cross screwdriver

RECOMMENDED TOOLS

- Flat file
- Round file
- Sandpaper

LIST OF PIECES



- | | |
|-----------------------------------|--------------------------------------|
| 1 Nose | 7 Screws B (2.3 x 3mm) x5 (1 spare) |
| 2 Radiator grille | 8 Rotor housing part C |
| 3 Nose mount plate | 9 Rotor housing part D |
| 4 Front bumper | 10 Screws C (2.3 x 4mm) x2 (1 spare) |
| 5 Bumper guards x2 | |
| 6 Screws A (2 x 4mm) x3 (1 spare) | |

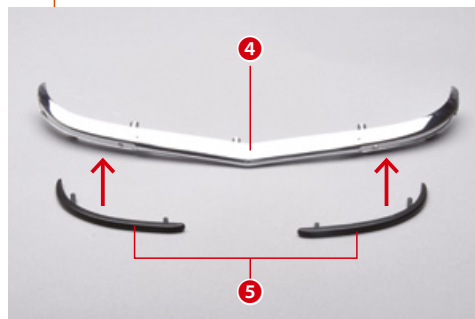
- Parts for the 1:8 scale Mazda Cosmo Sport model car
- Parts for the 1:2 scale rotary engine

COSMO SPORT

Step

1

The bumper guards



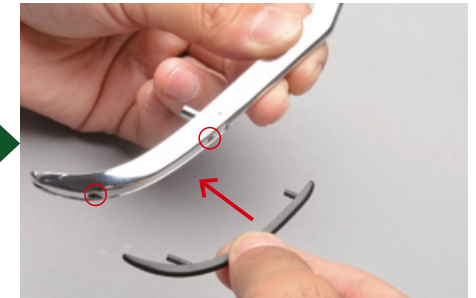
Attach the guards to the front bumper, as shown in the photo.



Insert the two linchpins on the guard into the holes in the bumper, as shown in the photo.



Press the pieces firmly until they click together.



Repeat the same operation on the other side of the bumper.

How the front bumper guards should look.





COSMO SPORT

Step

2

Attaching the bumper to the car body



TIP

USE A FILE!

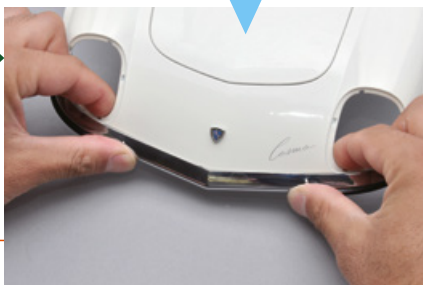
If you have difficulty attaching the bumper to the car body, we recommend using a round file to file down the edges of the holes where you are going to insert the linchpins on the bumper.



Attach the bumper to the front section of the car body: insert the three linchpins on the bumper into the holes indicated in the photo.



Press firmly until the bumper clicks into place.

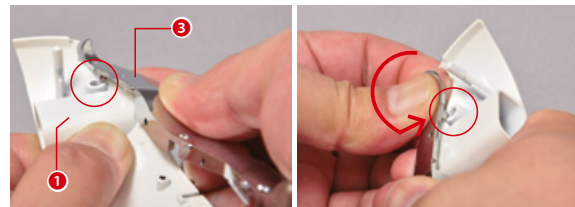


COSMO SPORT

Step

3

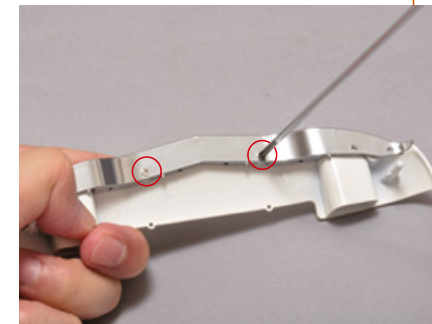
Radiator grille



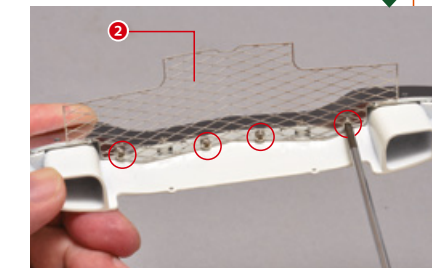
Attach the nose to its mount plate by inserting the linchpins on the latter into the corresponding holes in the nose. Use the photos to help you join the pieces correctly.



Compare your completed nose with the one in the photo to check that you have assembled the pieces correctly.



Secure the two pieces with two type A screws, which came with this stage.



Now attach the radiator grille and secure all the pieces with four type B screws, as shown in the photo.

ROTARY ENGINE

Step

4

The rotor housing - 1

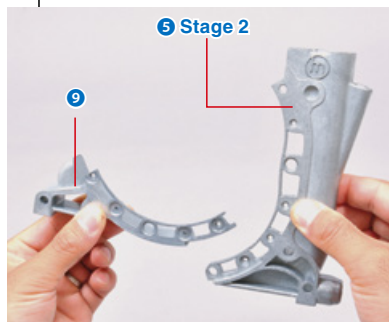


TIP

USE A FILE!

Join parts B and D of the rotor housing as shown in the photo.

If you have difficulty getting the two parts of the rotor housing to fit together, file down the surfaces with a flat file or sandpaper.



Secure the pieces with a type C screw, as shown in the photo. Do not tighten it completely.

FINAL RESULT



The next stage

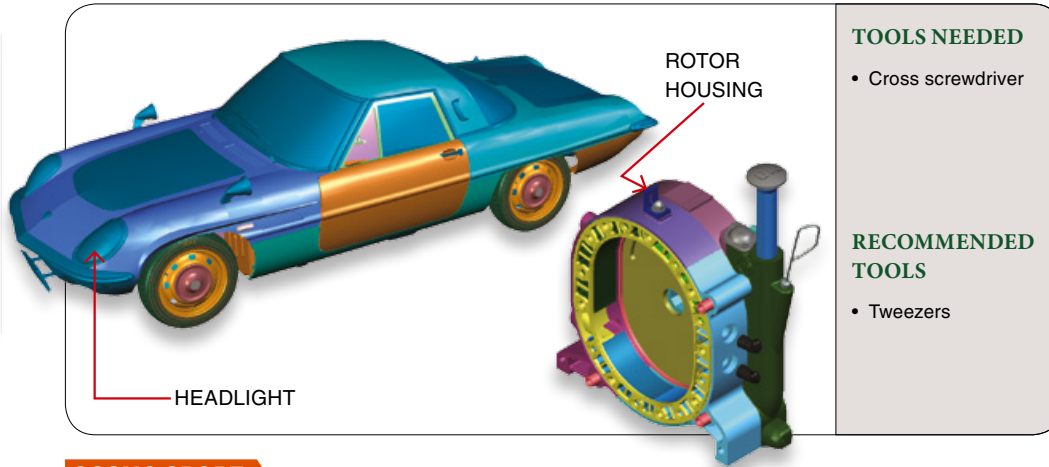


Keep everything in a safe place with the other pieces.



4 THE HEADLIGHTS

In this stage you will install the headlights on the front section of the car body. You will also assemble one of your model's wheels. Handle the pieces very carefully.



LIST OF PIECES

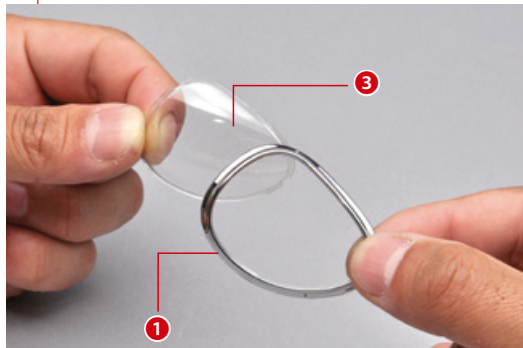


• Parts for the 1:8 scale Mazda Cosmo Sport model car
 • Parts for the 1:2 scale rotary engine

COSMO SPORT

Step

1 The right headlight



Join the rim (R) to the headlight (R), as shown in the photo.

Attach the right headlight to the front section of the car body by aligning the linchpins on the rim with the holes in the body.



Look at the photo to help you attach the headlight to the body.

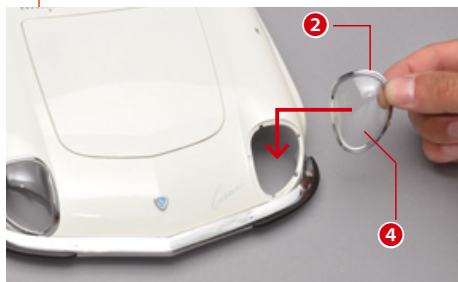


Press the rim in firmly.



COSMO SPORT

Step 2 The left headlight



Repeat the operations in Step 1 to assemble the left headlight and attach it to the body.



Here are the headlights correctly attached to the body.

COSMO SPORT

Step 3 The first wheel



Put the tyre on the wheel rim, as shown in the photo.

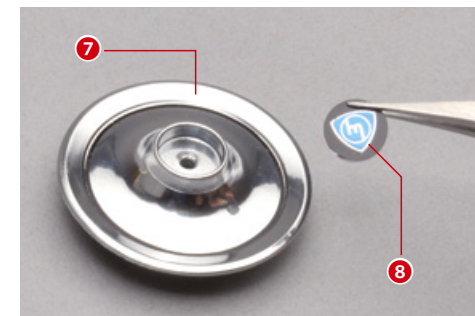


Make sure the edges line up like those in the photo.

How the first wheel should look.

COSMO SPORT

Step 4 The hubcap



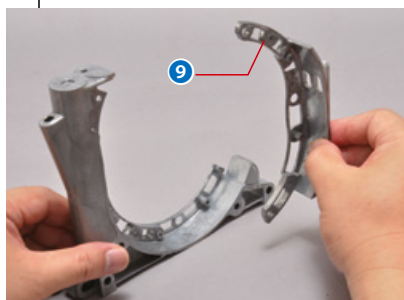
Insert the linchpin on the wheel emblem into the middle hole in the hubcap.

When you attach the hubcap to the wheel, you can remove the emblem and then put it back in the desired position.

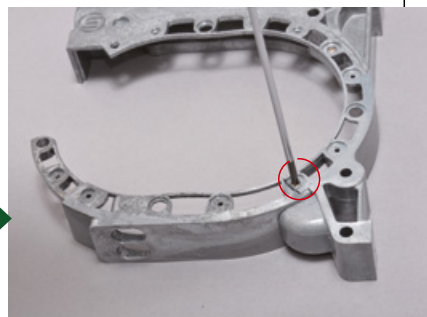


ROTARY ENGINE

Step 5 The rotor housing - 2



Attach part E of the rotor housing to the piece you assembled in the previous stage.



Secure the pieces together with one of the screws you received with this stage. Do not tighten the screw completely.

FINAL RESULT



The next stage

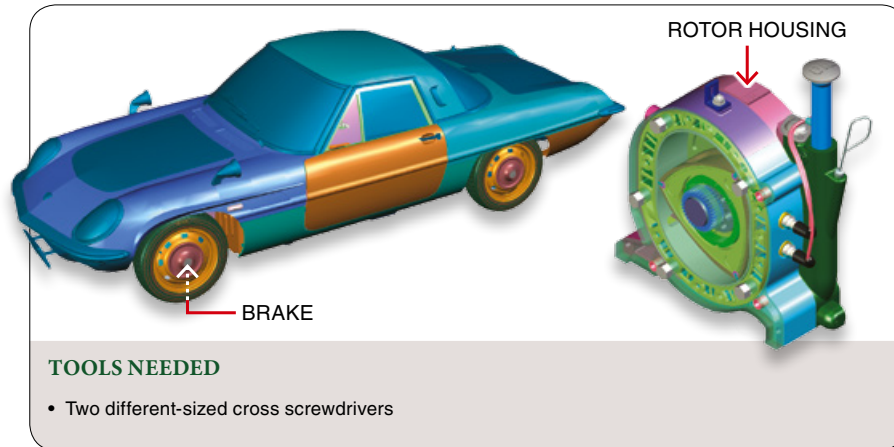


Keep everything in a safe place with the other pieces.

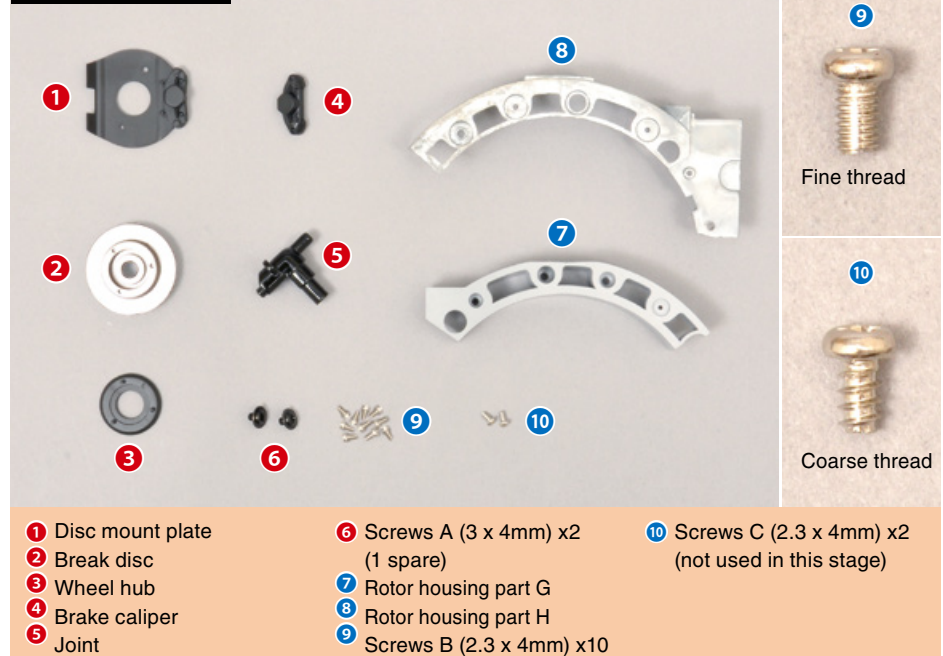


5 THE FIRST BRAKE

In this stage you will mount the brake on the front left wheel you assembled in the previous stage. You will also continue to work on the rotor housing.



LIST OF PIECES

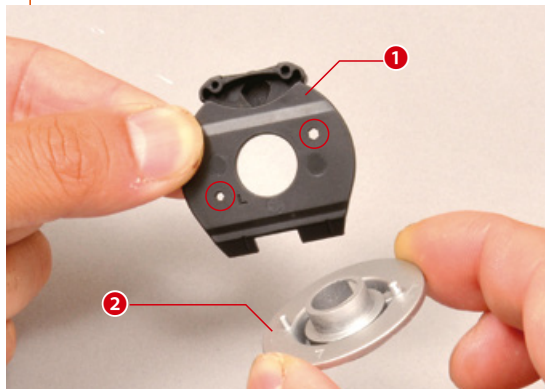


• Parts for the 1:8 scale Mazda Cosmo Sport model car • Parts for the 1:2 scale rotary engine

COSMO SPORT

Step

1 Assembling the brake



Now attach the wheel hub to the piece you just assembled.



The wheel brake is now ready.



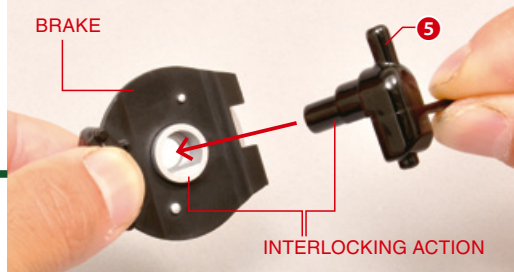


COSMO SPORT

Step

2 Inserting the joint

Position the pieces as shown in the photo and insert the joint.



Push the joint until it clicks into place.

Screw in a type A screw as shown in the photo. Do not tighten it as this is a temporary assembly.

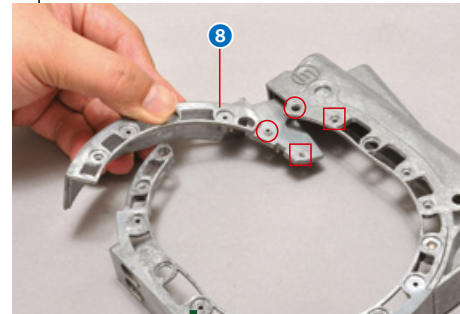


ROTARY ENGINE

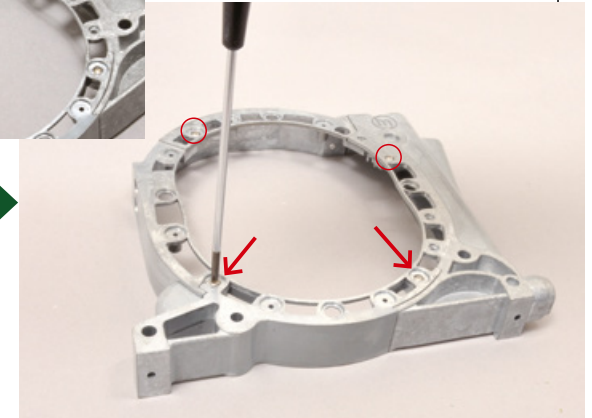
Step

3 The rotor housing - 3

Attach part H of the rotor housing to the piece you assembled in the previous stages. Line up the interlocking elements as shown in the photo. If you experience any difficulty, loosen the screws that are holding the pieces together.



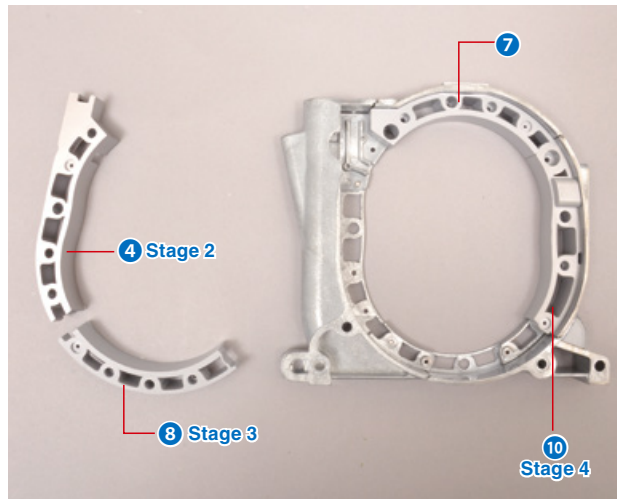
Secure with two type B screws, using the holes circled in the photo. Now you can also completely tighten the screws indicated by the arrows.



ROTARY ENGINE

Step

4 The rotor housing - 4



Turn the rotor housing upside down and attach parts F (no. 10 stage 4) and G (no. 7 stage 5).

Secure the pieces with four type B screws, as shown in the photo.

FINAL RESULT



Keep everything in a safe place with the other pieces.

The next stage

